

**OUR MISSION: PROVIDING FOOD AND MEETING THE OTHER NEEDS OF OUR NEIGHBORS WITH DIGNITY DURING THIS PERIOD OF CRISIS AND BEYOND**

## EACH WEEK WE PROVIDED ...

**HEALTHY FOOD  
To**

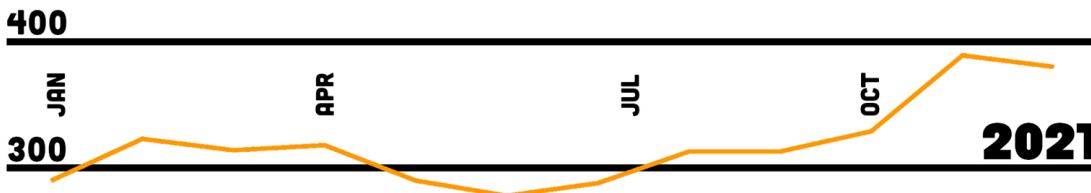


**FOOD PACKAGES**



**TONS  
OF  
FOOD  
EVERY  
WEEK**

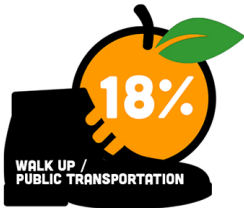
## WEEKLY AVERAGE HOUSEHOLDS SERVED



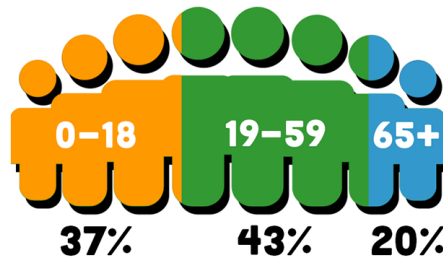
"We deliver more than just food— it's the care that comes along with it, too."

- John Ross  
Director, Nourishing Bethesda  
NPR's ALL THINGS CONSIDERED

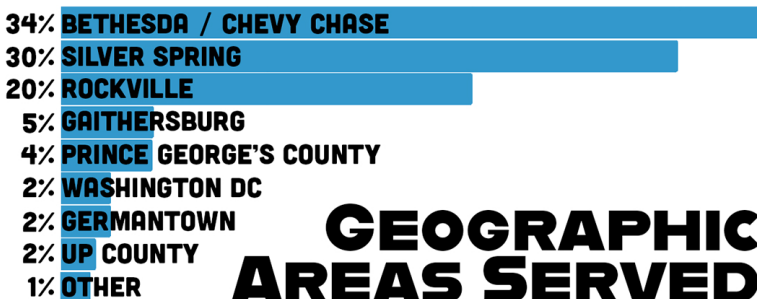
**FOOD  
ACCESS**



**POPULATION  
SERVED**



**FOOD TYPE  
DISTRIBUTED AVERAGE  
WEEKLY POUNDS  
PER HOUSEHOLD**



**GEOGRAPHIC  
AREAS SERVED**

**OVER 400 VOLUNTEERS  
HAVE GIVEN  
MORE THAN 6,400 HOURS**



#NOURISHINGBETHESDA

